



ATTACHMENTS

UNDER SEPARATE COVER

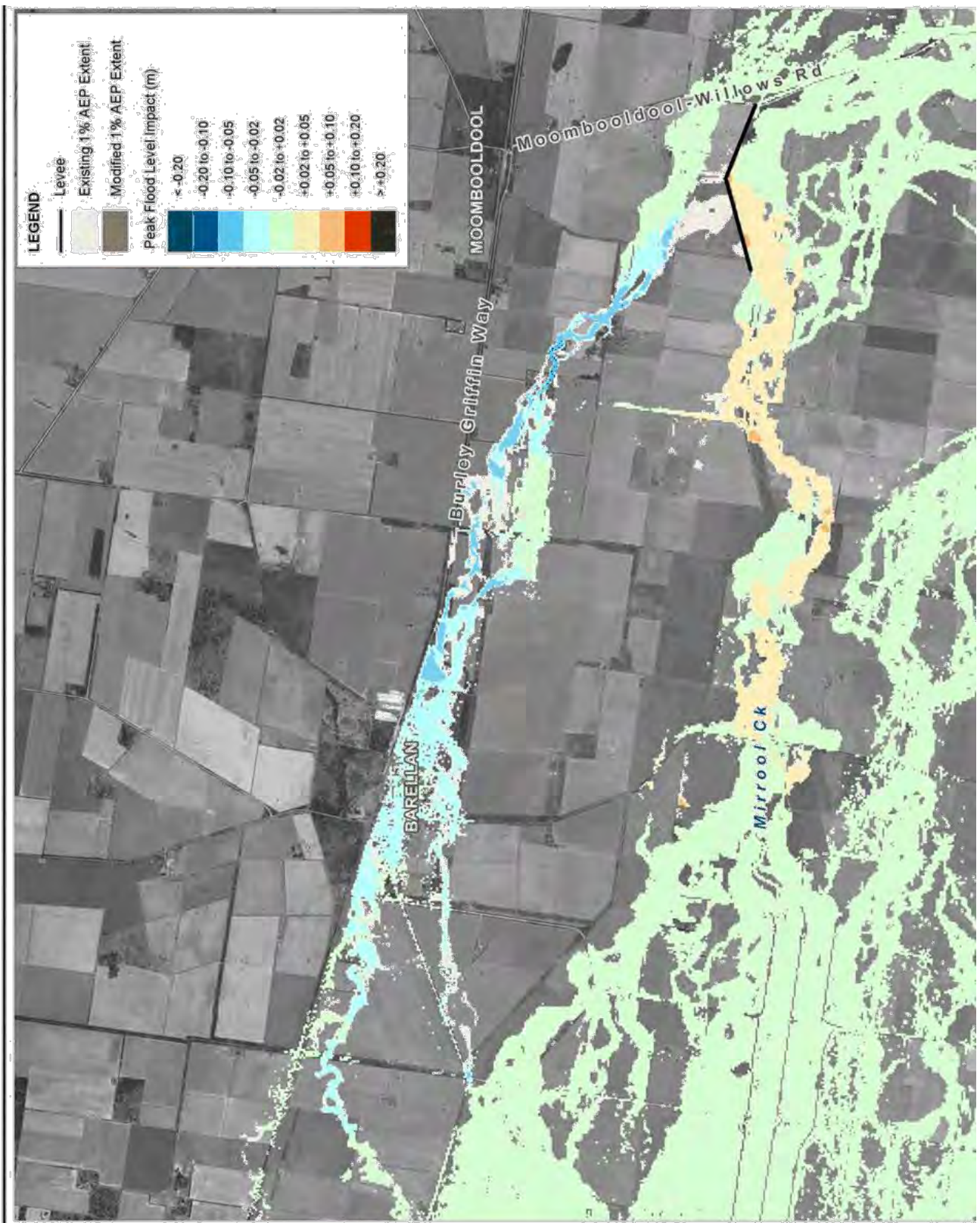
Ordinary Council Meeting

13 December 2017

Barellan Floodplain Risk Management Study and Draft Plan
Peak Flood Level Impact **Maps Levee Option 2b**

68

Appendix F. Peak Flood Level Impact Maps Levee Option 2b



Title:
Barellan FRMS&P Levee Option 2b
2% AEP Change in Peak Flood Level

Figure:
F-1

Rev:
A

BMT WBM endeavours to ensure that the information provided in this map is correct at the time of publication. BMT WBM does not warrant, guarantee or make representations regarding the currency and accuracy of information contained in this map.

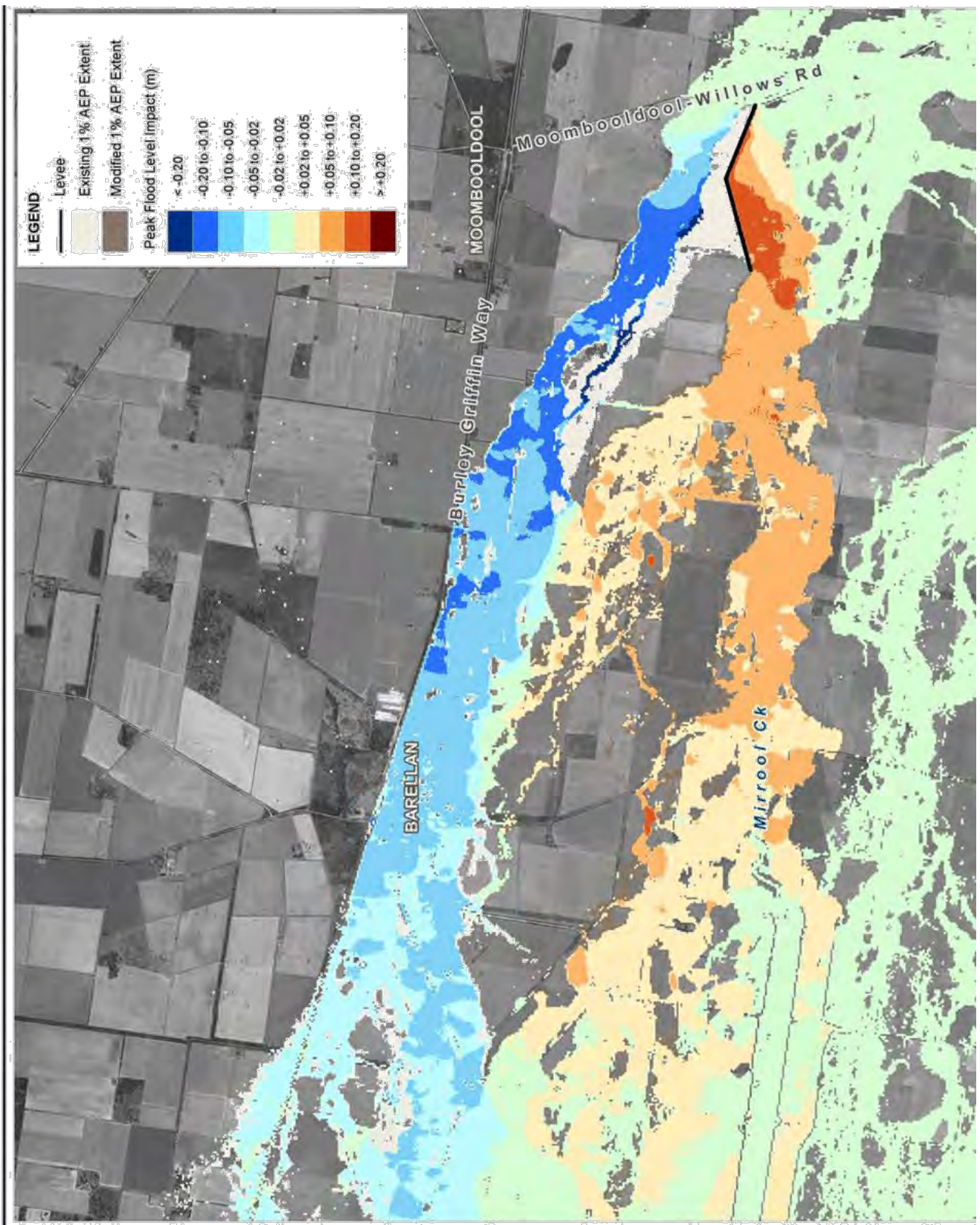


0 1 2km
 Approx. Scale



www.bmtwbm.com.au

Filepath: G:\2015\Barellan FRMS&P\Map\Map\Barellan FRMS&P_Levee_Opt_2b_50\WB



Title:
Barellan FRMS&P Levee Option 2b
1% AEP Change in Peak Flood Level

Figure:
F-2

Rev:
A

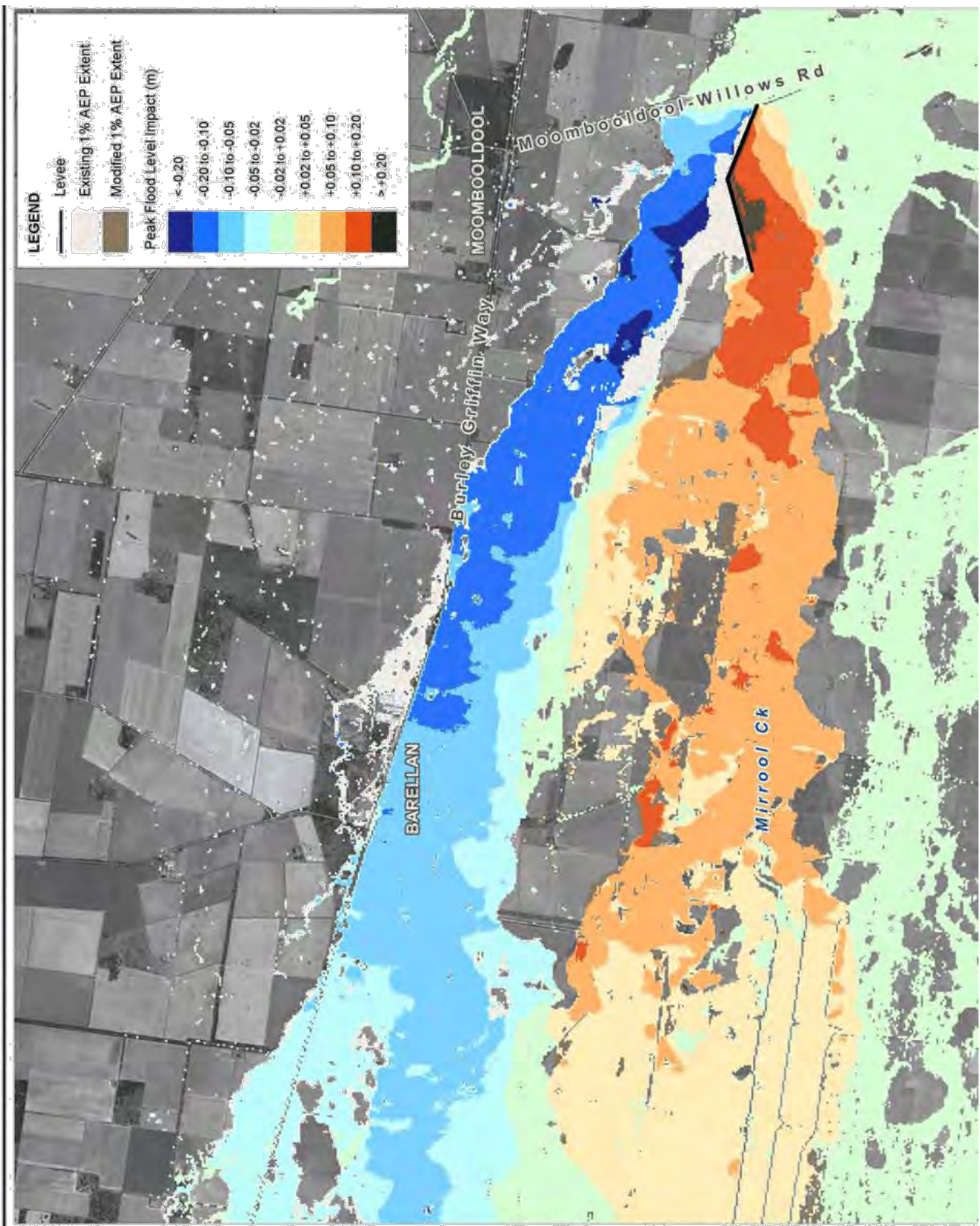
BMT WBM endeavours to ensure that the information provided in this map is correct at the time of publication. BMT WBM does not warrant, guarantee or make representations regarding the currency and accuracy of information contained in this map.



0 1 2km
 Approx. Scale



Filepath: \\P:\2015\Barellan FRMS&P\Map\Map\Barellan FRMS&P_Levee_Opt_2b_100_WCB



Title:
Barellan FRMS&P Levee Option 2b
0.5% AEP Change in Peak Flood Level

Figure:
F-3

Rev:
A

BMT WBM endeavours to ensure that the information provided in this map is correct at the time of publication. BMT WBM does not warrant, guarantee or make representations regarding the currency and accuracy of information contained in this map.

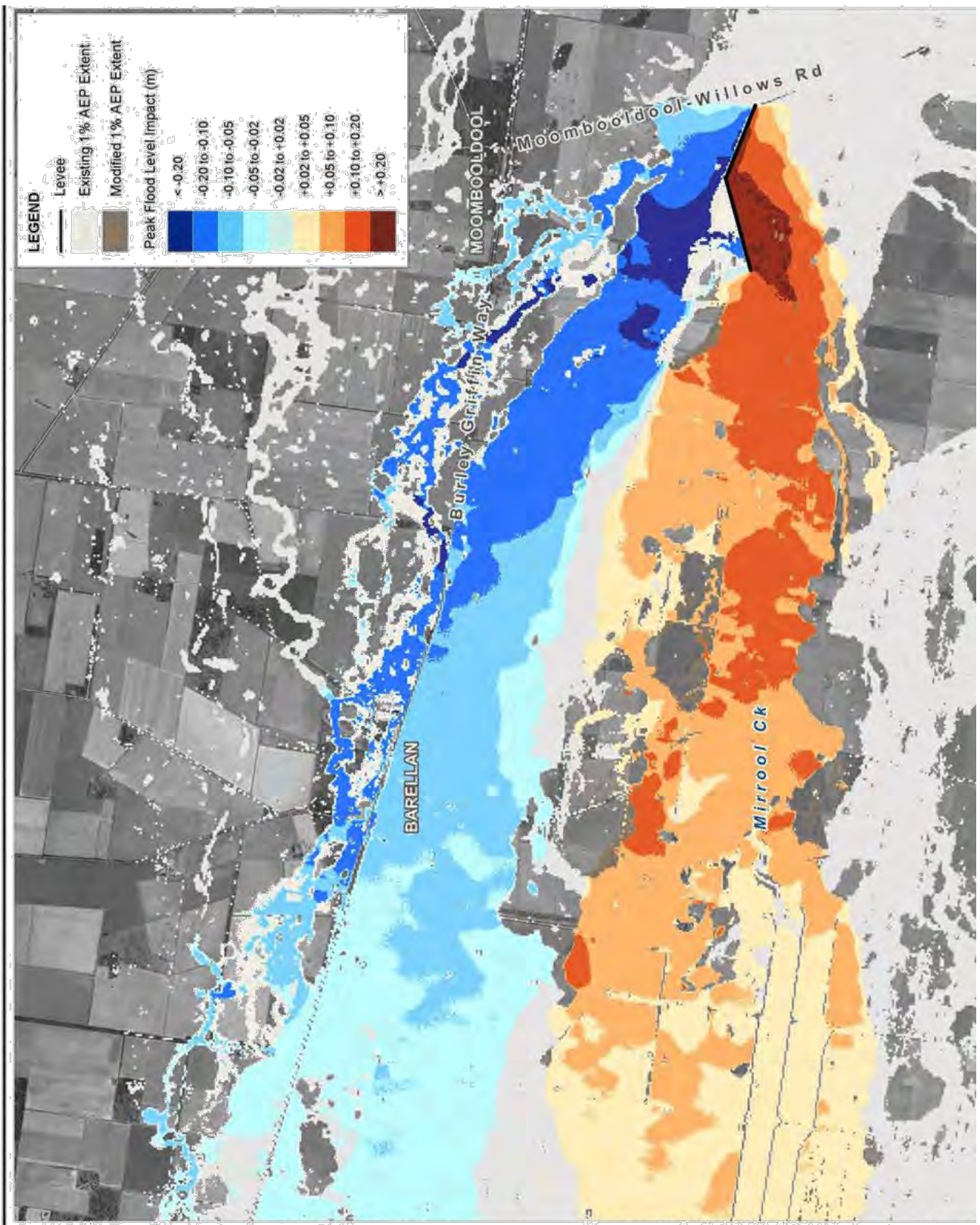


0 1 2km
 Approx. Scale



www.bmtwbm.com.au

Filepath: F:\N20554_Barellan_Flood_Simulation\Workspaces\FRMS&P_F03_170909_Levee_Opt_2b_000_WCB



Title:
Barellan FRMS&P Levee Option 2b
0.2% AEP Change in Peak Flood Level

Figure:
F-4

Rev:
A

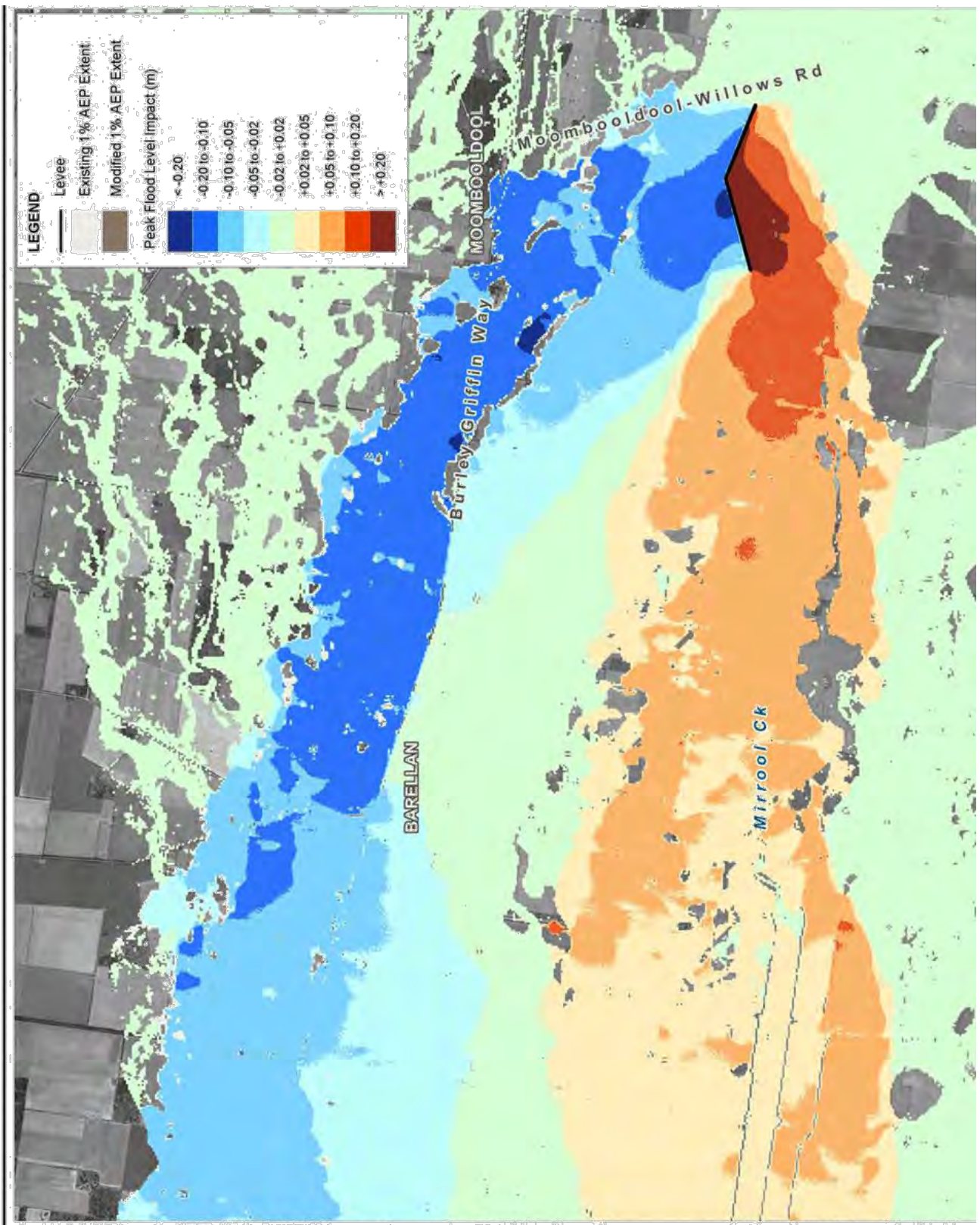
BMT WBM endeavours to ensure that the information provided in this map is correct at the time of publication. BMT WBM does not warrant, guarantee or make representations regarding the currency and accuracy of information contained in this map.



0 1 2km
 Approx. Scale



Filepath: G:\N20551 - Barellan Flood Study\Maping\Map\020551FRMS&P_E01_170001_Levee_Opt_2b_500_WCB



Title:
Barellan FRMS&P Levee Option 2b
Extreme Flood Change in Peak Flood Level

Figure:
F-5

Rev:
A

BMT WBM endeavours to ensure that the information provided in this map is correct at the time of publication. BMT WBM does not warrant, guarantee or make representations regarding the currency and accuracy of information contained in this map.



0 1 2km
 Approx. Scale



Filepath: \\AN20551-Barellan-Flood-Study\Maping\Map\Legend\FRMS&P_Levee_Opt_2b_Peak_Flood_Level.mxd